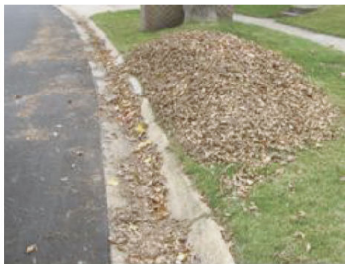


NOTICE

LEAF PROGRAM

Participant Guidelines

Rake Leaves into long narrow piles along the curb (not into the street IF POSSIBLE). The hose will not reach more than a few feet from the curb.



YES! Proper placement of leaf piles.



NO! Please do not place leaf piles in the street.

Please park vehicles off the street when possible) we will apply the same rules as for snow removal).



The leaf vacuums can only accept leaves. Please do not place sticks, pine cones, gravel or other non-leaf objects in your piles. Damage to our leaf vacs can delay collection.

www.crawfordsville.net



THANK YOU FOR HELPING KEEP OUR STREETS AND INLETS CLEAN.